

2008 MIDDLESEX YOUTH SOCCER LEAGUE
COMMISSIONER'S CUP

Welcome to the 2008 Middlesex League Commissioner's Cup and Championship Weekend. This year's tournament will be held on Saturday, June 14th and Sunday, June 15th at New this year, we have incorporated the Mass Tournament of Champions qualifying games into our Commissioner's Cup weekend. We look forward to seeing the best soccer MYSL has to offer in one venue.

The Under 10 divisions and divisions 3& 4 for Under 12 and 14 will play a three game round robin format. While the MTOC eligible divisions U12, U14 divisions 1 & 2 will play a two round single elimination format. Finals will be held for U16, U18 and U19.

The tournament will be held at the **Joyce Middle School Soccer Complex**, 55 Locust Woburn, MA 01801 The MYSL and Woburn boards of directors request your attention to rules of the tournament (pgs.8-10) to insure a safe and enjoyable soccer weekend.

Dan Baker
MYSL VP Development
Commissioner's Cup Director

John Linnehan
MYSL President

Phil Good
MYSL Commissioner's Cup
Referee Assignor

Paul Tobin
President
Woburn Youth Soccer

Kevin Brothers
Commissioner/VP
Woburn Youth Soccer

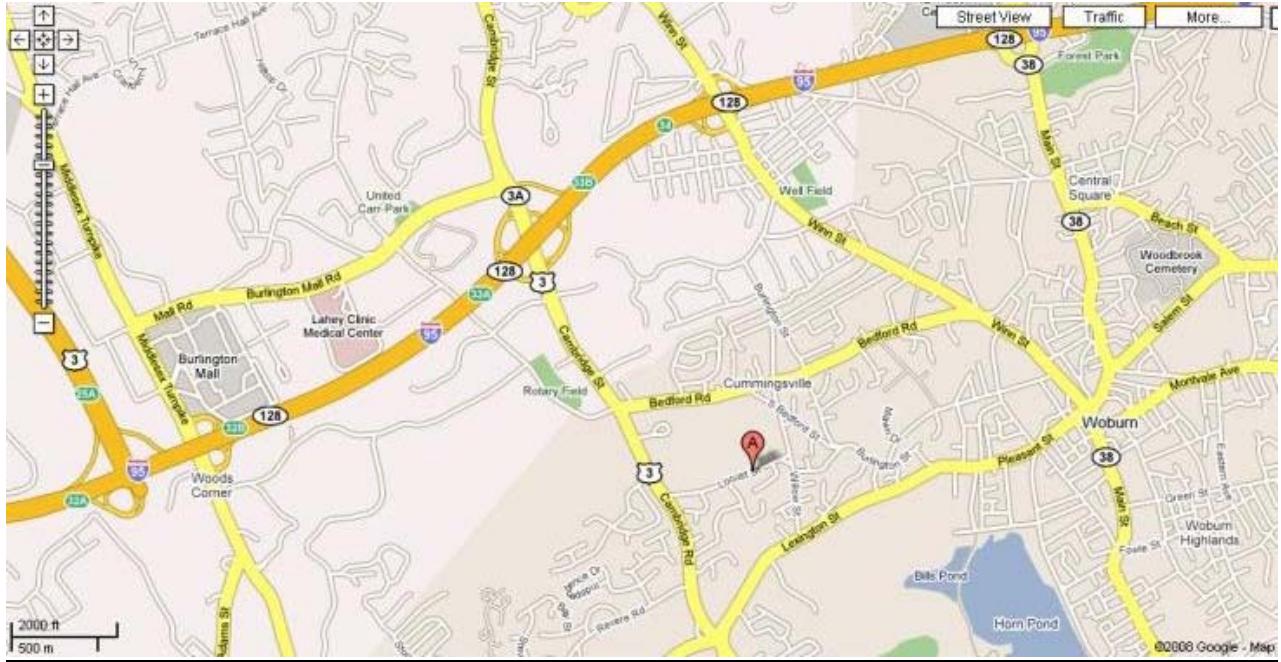
Contents

Page 2	Field Site Map
Page 3	Joyce Complex Layout
Page 4	U10 Schedules
Page 5	U12 Schedules
Page 6	U14 Schedules
Page 7&8	Team schedule ID's
Page 9	Commissioner's Cup Rules
Page 10	Rules of Competition
Page 11	MTOC Qualifying

Per Woburn City Ordinance, No Pets are allowed on school grounds!

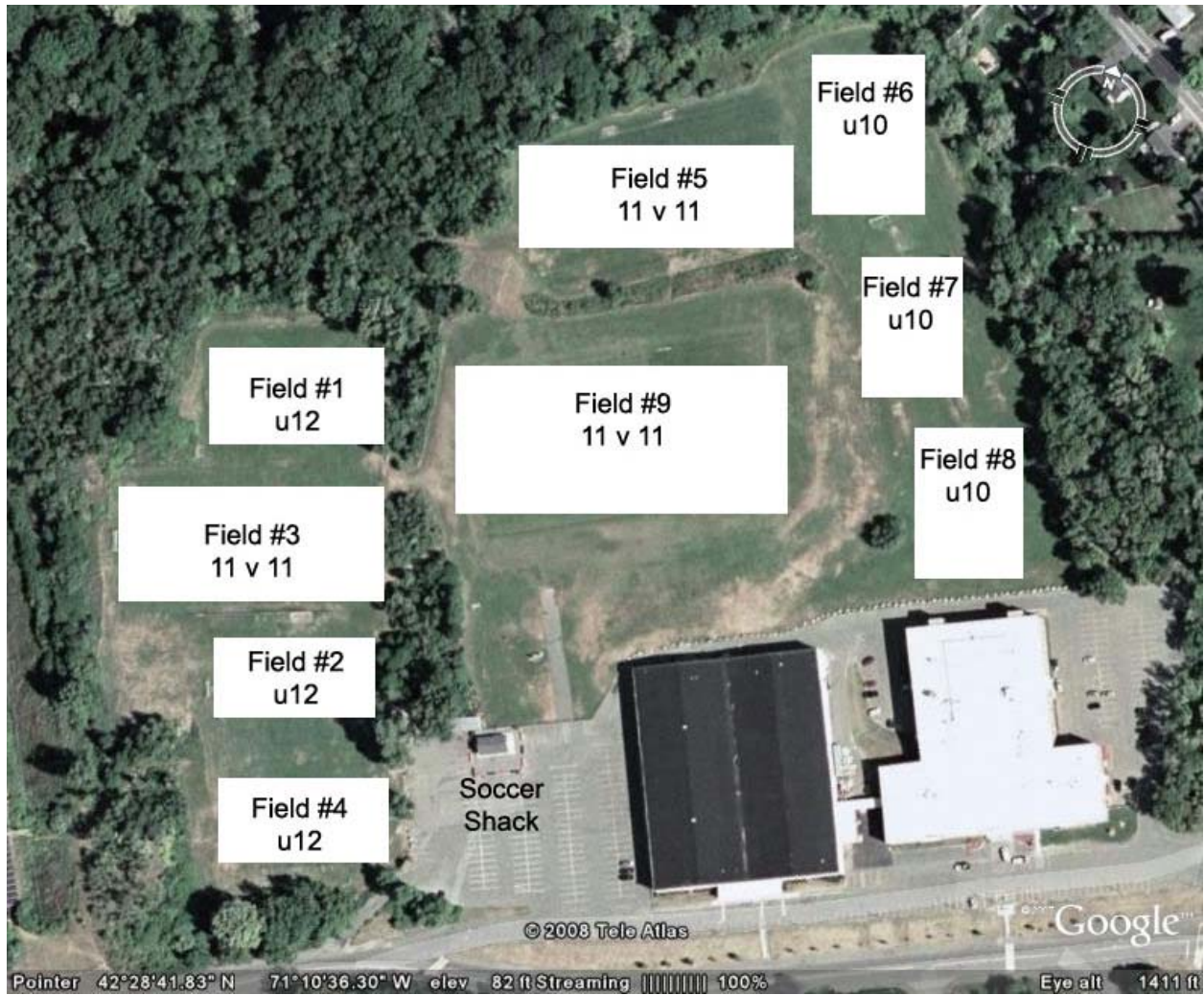
2008 COMMISSIONER'S CUP FIELD SITE

Joyce Middle School Soccer Complex



Revised 6/15/2008

2008 COMMISSIONER'S CUP
Joyce Middle School Complex



Revised 6/15/2008

2008 COMMISSIONER'S CUP
U10
SATURDAY SCHEDULE 6/14/08

Time	Field 6		Field 7		Field 8
8:00	B1-B2		B3-B4		G16-G13
9:00	B5-B6		B7-B8		G14-G15
10:00	B9-B10		B11-B12		G12-G9
11:00	B13-B14		B15-B16		G10-G11
12:00					
1:00	B1-B3		B2-B4		G4-G1
2:00	B5-B7		B6-B8		G2-G3
3:00	B9-B11		B10-B12		G8-G5
4:00	B13-B15		B14-B16		G6-G7

U10
SUNDAY SCHEDULE 6/15/08

Time	Field 6		Field 7		Field 8
8:00	G1-G2		G3-G4		B16-B13
9:00	G5-G6		G7-G8		B14-B15
10:00	G9-G10		G11-G12		B12-B9
11:00	G13-G14		G15-G16		B10-B11
12:00					
1:00	G1-G3		G2-G4		B4-B1
2:00	G5-G7		G6-G8		B2-B3
3:00	G9-G11		G10-G12		B8-B5
4:00	G13-G15		G14-G16		B6-B7

2008 COMMISSIONER'S CUP
U12
SATURDAY SCHEDULE 6/14/08

Time	Field 1		Field 2		Field 4
8:00	B23-B22		G27-G28		G25-G26
8:30					
9:00			G31-G32		G29-G30
9:30	G21-G22				
10:00			B26-B27		B28-B25
10:30					
11:00	G18-G19				
11:30					
12:00			G26-G28		G25-G27
12:30					
1:00	B21-B24		G30-G32		G29-G31
1:30					
2:00					B32-B29
2:30	B18-B19		G23-G24		
3:00					B30-B31
3:30					
4:00	G17-G20		B17-B20		

U12
SUNDAY SCHEDULE 6/15/08

Time	Field 1		Field 2		Field 4
8:00					
9:00	G12-2 Final		B27-B28		B25-B26
10:00			B31-B32		B29-B30
11:00	B12-2 Final		G26-G27		G28-G25
12:00					
1:00	G12-1 Final		B26-B28		B25-B27
2:00			B30-B32		B29-B31
3:00	B12-1 Final		G30-G31		G32-G29
4:00					

MTOC Qualifier

Revised 6/15/2008

2008 COMMISSIONER'S CUP

U14

SATURDAY SCHEDULE 6/14/08

Time	Field 9		Field 3		Field 5
8:00	B33-B36		G45-G46		G47-G48
8:30					
9:00			G41-G42		G43-G44
9:30	G33-G36				
10:00			B45-B46		B47-B48
10:30					
11:00	G39-G38				
11:30					
12:00			G45-G47		G46-G48
12:30					
1:00	G34-G35		G41-G43		G42-G44
1:30					
2:00					B43-B44
2:30	B34-B35		G37-G40		
3:00					B41-B42
3:30					
4:00	B37-B40		B39-B38		

U14/U16/U18/U19

SUNDAY SCHEDULE 6/15/08

Time	Field 9		Field 3		Field 5
8:00	G14-1 Final		B45-B47		B46-B48
8:30					
9:00			B41-B43		B42-B44
9:30					
10:00	G16-2 Final		G44-G41		G42-G43
10:30					
11:00			G48-G45		G46-G47
11:30					
12:00					
12:30	G18 Final		G14-2 Final		
1:00					B46-B47
1:30					
2:00					B48-B45
2:30			B14-2 Final		
3:00	B18 Final				B42-B43
3:30					
4:00					B44-B41
4:30			B14-1 Final		
5:00					
5:30	B19 Final				

MTOC Qualifier

Revised 6/15/2008

2008 COMMISSIONER'S CUP
Team Schedule ID's

Girls U10 Div 1			Boys U10 Div 1	
G1	Billerica 1		B1	Westford 1
G2	Wilmington 1		B2	Wilmington 1
G3	Wakefield 1		B3	Billerica 1
G4	North Reading 1		B4	Somerville 1
Girls U10 Div 2			Boys U10 Div 2	
G5	Billerica 2		B5	Everett 1
G6	Wilmington 3		B6	Burlington 1
G7	Wilmington 2		B7	Melrose 1
G8	Stoneham 1		B8	Malden 1
Girls U10 Div 3			Boys U10 Div 3	
G9	Lowell 2		B9	Westford 4
G10	Westford 2		B10	Lowell 2
G11	Wilmington 5		B11	Westford 3
G12	Westford 3		B12	Billerica 3
Girls U10 Div 4			Boys U10 Div 4	
G13	Chelmsford 3		B13	Westford 4
G14	Billerica 5		B14	Lowell 2
G15	Wilmington 9		B15	Westford 3
G16	Waltham 4		B16	Billerica 3
Girls U12 Div 1			Boys U12 Div 1	
G17	Tewksbury 1		B17	Wilmington 1
G18	Woburn 1		B18	Lowell 1
G19	Burlington 1		B19	Revere 1
G20	Wilmington 1		B20	Woburn 1
Girls U12 Div 2			Boys U12 Div 2	
G21	Chelmsford 1		B21	Dracut 1
G22	Lowell 1		B22	North Reading 1
G23	Reading 1		B23	Stoneham 1
G24	Stoneham 1		B24	Waltham 1

Girls U12 Div 3		Boys U12 Div 3	
G25	Woburn 3	B25	Waltham 2
G26	Medford 2	B26	North Reading 3
G27	Stoneham 4	B27	Somerville 4
G28	Wilmington 6	B28	Lowell 2
Girls U12 Div 4		Boys U12 Div 4	
G29	Billerica 4	B29	Dracut 3
G30	Chelmsford 3	B30	Malden2
G31	P.A.C. 1	B31	Westford 5
G32	Wakefield 4	B32	Medford 5
Girls U14 Div 1		Boys U14 Div 1	
G33	Wakefield 1	B33	Everett 1
G34	Wilmington 1	B34	Woburn 1
G35	Melrose 1	B35	Pac 1
G36	Tewksbury 1	B36	Wilmington 1
Girls U14 Div 2		Boys U14 Div 2	
G37	Medford 1	B37	Revere 1
G38	Reading 1	B38	Stoneham 1
G39	Lowell 1	B39	Malden 1
G40	No. Reading 1	B40	Reading 1
Girls U14 Div 3		Boys U14 Div 3	
G41	Woburn 3	B41	Waltham 1
G42	Wilmington 4	B42	Everett 2
G43	Waltham 2	B43	Woburn 3
G44	Reading 2	B44	Burlington 2
Girls U14 Div 4		Boys U14 Div 4	
G45	Waltham 3	B45	Woburn 4
G46	Lowell 2	B46	North Reading 4
G47	Wilmington 6	B47	Westford 3
G48	Wakefield 4	B48	Wilmington 4

Revised 6/15/2008

2008 COMMISSIONER'S CUP RULES

- 1) Players and Coaches **must** check in 30 minutes before their 1st game each day. Teams **must** have player (U12-U14) and coach pass cards and a stamped 2008 spring roster. Players **must** present themselves dressed to play. The tournament officials will keep the roster. Coaches **must** also have a stamped 2008 spring roster in their possession during all games.
- 2) Teams will be awarded 3 points for a win, 1 point for a tie. Most points will be used to determine the cup champion. Awards will be presented to the cup champion and the runners-up.
- 3) If teams are tied in points, the following tiebreaker rules will be used, in the following order:
 - Head to head competition
 - Least goals allowed
 - Goal differential, maximum 3 per game

If more than two teams are tied, the tiebreaker system will be used to select one clear winner. Then, from the remaining teams, the system will be used again to determine the next clear winner.

- 4) There is a zero tolerance policy in place for this tournament regarding referees. This means verbal or physical abuse will not be tolerated. Let the officials do their job.
- 5) **No pets allowed!** People who bring pets to the field will be asked to leave the premises!
- 6) Tents will be allowed in designated areas only.
- 7) The commissioner's cup director will have the final say on any and all discrepancies that may occur. There will be no protests entertained.

2008 Commissioner's Cup Rules of Competition

U14 Division 3 & 4 Match Rules

- Halves are 25 minutes long with a 5-minute rest interval between halves.
- Games need to be started on time. Teams should be warmed up ready to begin when the game ahead of them ends.
- Ties stand in all matches.
- All games are played with running time.
- Unlimited substitutions on throw-ins for both teams if the team in possession substitutes first, on goal kicks, and after a goal.
- An injured player must be replaced if the referee stops play. The opposing team may have an equal substitution.
- A player issued a yellow card MAY be substituted at the option of the coach.
- Sent-off players or dismissed team officials must leave the playing area and may not remain with their team.
- **A player sent-off for serious foul play or violent conduct will be disqualified for the remainder of the tournament.**
- FIFA Laws of the Game are in force for anything else not mentioned above.

U12 Division 3& 4 8v8 Match Rules

- All of the above U14 rules apply.
- An indirect free kick is awarded to the opposing team at the center spot on the halfway line if a goalkeeper punts or drop kicks the ball in the air from his/her penalty area into the opponent's penalty area.
- Opponents must give 8 yards on free kick or corner kick.
- Penalty mark is at ten yards.

U10 Match Rules

- All of the above U14 rules apply.
- No Penalty Kicks; the ball should be brought to the nearest point outside the penalty area.
- No offside.
- An indirect kick will be awarded at the halfway line nearest the point where any ball that is kicked from a goal kick or is punted or thrown by the goalie crosses in the air.
- Opponents must give 8 yards on free kick or corner kick.

2008 MTOC Qualifying Rules of Competition

U18 & 19 Match Rules

- FIFA Laws of the Game are in effect.
- Halves are 45 minutes long with a 5-minute rest interval between halves.
- Games need to be started on time. Teams should be warmed up ready to begin at the designated time.
- A winner must be determined. Therefore, overtime, 15 min halves, and kicks from the penalty spot, if necessary, will be used. If overtime is needed, both halves will be played to completion. If the score is still tied, then teams will proceed immediately to kicks from the penalty mark in accordance with FIFA rules. All matches unfinished due to any cause shall be replayed if neither team is at fault. However, if play is stopped at any time due to one of the teams being adjudged to be at fault, it shall be at the discretion of the Cup Director whether the game is to be replayed or declared a forfeit.
- Sent-off players or dismissed team officials must leave the playing area and may not remain with their team.

U16 Division 1 & 2 Match Rules

- All of the above U18/19 rules apply.
- Halves are 40 minutes long with a 5-minute rest interval between halves.
- Overtime of two 15 min halves followed by kick from the penalty spot if needed.

U14 Division 1 & 2 Match Rules

- All of the above U18/19 rules apply.
- Halves are 35 minutes long with a 5-minute rest interval between halves.
- Overtime of two 10 min halves followed by kick from the penalty spot if needed.

U12 Division 1& 2 8v8 Match Rules

- All of the above U18/19 rules apply.
- Halves are 30 minutes long with a 5-minute rest interval between halves.
- Overtime of two 10 min halves followed by kick from the penalty spot if needed
- An indirect free kick is awarded to the opposing team at the center spot on the halfway line if a goalkeeper punts or drop kicks the ball in the air from his/her penalty area into the opponent's penalty area.
- Opponents must give 8 yards on free kick or corner kick.
- Penalty mark is at ten yards